



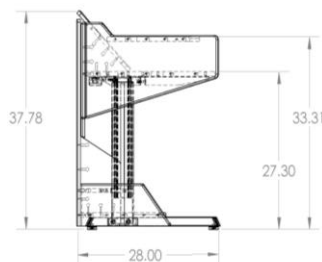
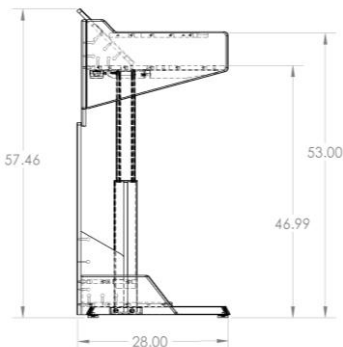
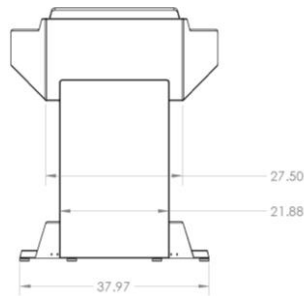
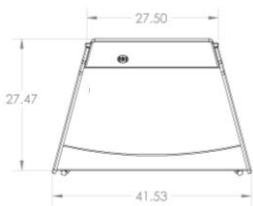
**LEL023** is an ADA lift/lower lectern. A contemporary and sturdy design, made from highly resistant thermowrap finished panels. The standard finish consists of 'SGT Shark Grey' on the outer body with your choice of finish on the front panel. LEL023 comes as a double top work surface with extra space on the underside to fit electronics. This lectern ships assembled and is perfect for lectures, conferences, and public presentations.

### Standard Features

- Lift/Lower Mechanism
- Wedge work surface
- Wire Management Solutions
- Cable grommets on the sides and top
- Highly resistant thermowrap finish
- Ships assembled

### Options

- **FWM100** Monitor Mount (VESA 50, 75 & 100)
- **PLM1022** LCD Monitor Mount
- **FM3** Countdown Timer and Clock
- **MIC-18** MX418 S/C Microflex Gooseneck Microphone
- **LIGHT-18** Adjustable Gooseneck Light
- **PB 6** Outlet 110V Power Bar
- **PC-PATCH** Power Panel with Surge Protection and USB Port
- **CUB3** Round Cable Well
- **CUB4** Round Cable Well
- **CUB22** Black 3 Module Panel
- **CUBM3** 3 Module Power & Data Panel
- **CUBM4** 4 Module Power & Data Panel
- **CHGQiB** Wireless Charging Station
- **CUSTOM CUTOUT** Cutouts for Electronics or Other Items



### Specifications

**Model:** LEL023

**Width:** 41.5"

**Depth:** 28.15"

**Height:** 33.8" - 53"

### Finishes:



Other finishes are available. Check website.