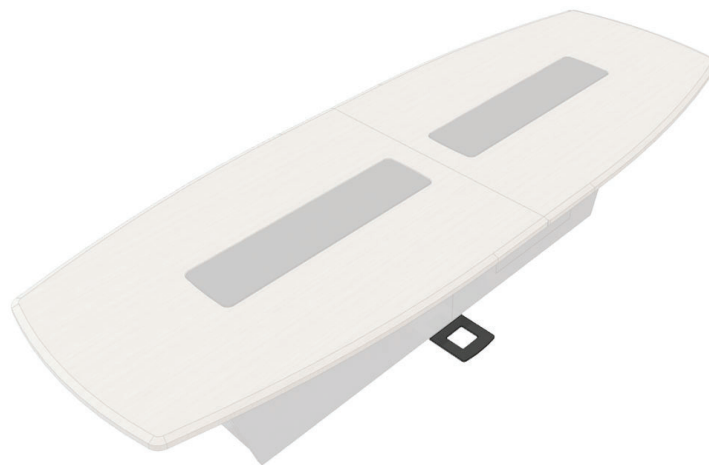


AVFI's **36BS4FR** weighted metal base is required for stability when two 36FR or 526FR table sections are put front to front (FTF).

Mounts to existing leg plate threads when table base legs are unscrewed.

Included in FTF configurations. Black finish.



36BS4FR metal base installed on a T3600-FTF table configuration

The information contained in this drawing is the sole property of Audio Visual Furniture International. Any reproduction in part or as a whole without the written permission of Audio Visual Furniture International is prohibited. We can build or modify stock configurations to suit customer specifications. Please contact us to discuss how this service can help meet your needs. Some quantity restrictions may apply. Specification subject to change without notice. Computers, cameras, monitors, etc. are shown to illustrate product usage and are not included unless otherwise noted.