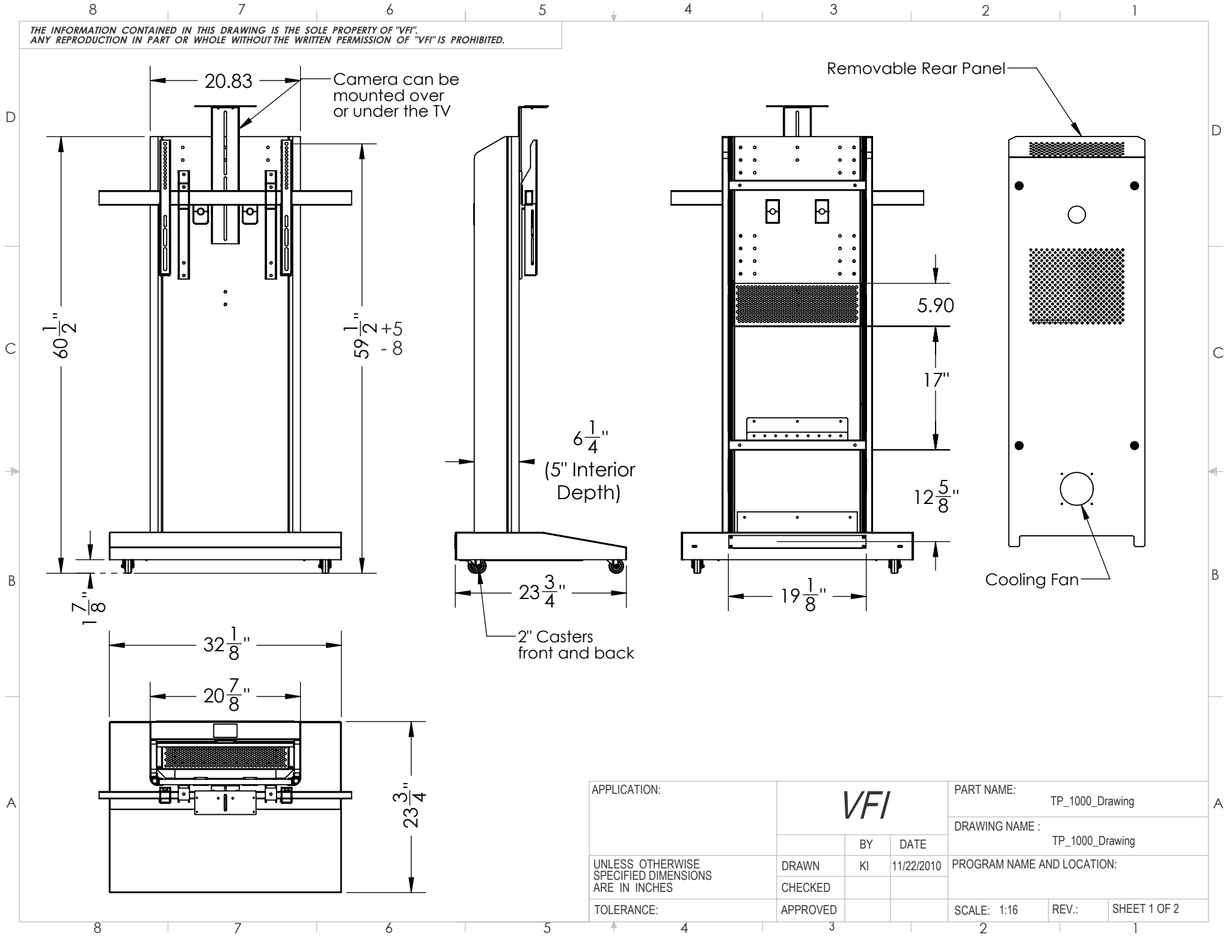


THE INFORMATION CONTAINED IN THIS DRAWING IS THE SOLE PROPERTY OF "VFI".  
 ANY REPRODUCTION IN PART OR WHOLE WITHOUT THE WRITTEN PERMISSION OF "VFI" IS PROHIBITED.



Camera can be mounted over or under the TV

Removable Rear Panel

6 1/4" (5" Interior Depth)

2" Casters front and back

Cooling Fan

APPLICATION:	<b>VFI</b>		PART NAME: TP_1000_Drawing		
			DRAWING NAME : TP_1000_Drawing		
UNLESS OTHERWISE SPECIFIED DIMENSIONS ARE IN INCHES	DRAWN	BY	DATE	PROGRAM NAME AND LOCATION:	
	CHECKED	KI	11/22/2010		
TOLERANCE:	APPROVED			SCALE: 1:16	REV.: SHEET 1 OF 2