

Options and accessories are available to customize our credenzas & racks to meet your needs.
Please check each product for fitting.

Mounts & Brackets



PM-S
Single Display Mount
40" - 80"
160 lbs max



PM-D
Dual Display Mount
2X 40" - 70"
160 lbs total max



PM-S-XL
Large Single Display Mount
50" - 90"
160 lbs max



PM2-S-XL
Large Single Display Mount
60" - 90"
200 lbs max



MM1232
Single Bracket Monitor Mount
Fits most 12" - 32" and some
37" monitors. Camera bracket
built-in. 200X200mm max.



CS
Camera/Codec Shelf
Wall mounted



TVCB
TV Mounted Camera Bracket
Designed for freestanding or
wall mounted TV
Fits 32" - 55" TV's



TVCB-XL
TV Mounted Camera Bracket
Designed for freestanding or
wall mounted TV
Fits 56" - 90" TV's



C900S
Adjustable Monitor Arm
Edge or grommet mounting



C900D
Adjustable Dual Monitor Arm
Edge or grommet mounting



Stand60
Eye Level Camera Stand
For Cisco SpeakerTrack60

Rack Accessories



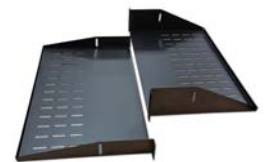
RR12-RR14-RR16-RR21
Set of Rack Rails
12U, 14U, 16U, 21U
10-32 thread (Sold separately)



9107
Lacing Bar (19" long)
Mounts to rack or sidewall



FAN
Cooling Fan
Quiet with 6 ft. power cord.
Grills included



9031/1-2-3
Utility Shelf
1-3 space rack utility vented shelf
Black only



9041
Sliding Shelf
Sliding rack mounted shelf
Black only



9052/2-3
Sliding Drawer
2-3 space rack mounted
steel sliding drawer. Black only

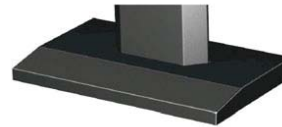
Other Accessories



CR-A-DR
Credenza Acrylic Door



PB
Power Bar
6 Outlet 110V Power Bar
with 10 ft. cord



PM-CVR
Cosmetic Steel Cover for Base
Fits PM-S, PM-D & PM-S-XL



MAGKEY
Additional Key for Hidden Locks
Fits our credenzas
(Except CR2050EX)



CASTER
6" Metal Caster
Features grey non-marking tire.
Two are locking



LEV4A
4" Leveler
-5mm adjustment or +30mm, +70mm
adjustment. Set of 4x, 5x or 6x.



GRC60 (B/W/G)
60mm Round Grommet
Black (B), White (W) & Grey (G)
available. Cutout may be required.



CUSTOM CUTOUT
Cutouts for electronics or other items