

Options and accessories are available to customize our carts, mounts & stands to meet your needs.
Please check each product for fitting.

Brackets



BKT-ST60

Camera Bracket

Allows you to mount the Cisco SpeakerTrack60 onto AVFI mount, tripod or flat surface



PM2-CCM

Center Camera Mount

For dual displays
Fits TP800-D, TP1000-D, T526-D & T526EX-D



CBB-TV

Under TV Camera Bracket

Fits all mounts or can be mounted on the wall



TVCB

TV Mounted Camera Bracket

Designed for freestanding or wall mounted TV
Fits 32" - 55" TV's



TVCB-XL

TV Mounted Camera Bracket

Designed for freestanding or wall mounted TV
Fits 56" - 90" TV's



MCB1925

Monitor & Camera Bracket

Fits 19" - 25" monitors



PM2-ARM

Side Mounting Camera Bracket

Available for TP1000/TP800 (All)
MC1000 (All)



PM-CAM

PM Series Camera Arm

Fits PM-S, PM-D & PM-S-FL mounts



CS

Camera/Codec Shelf

Wall mounted



BKT-C20

C20 Codec Bracket

Fits all our products and can also be wall mounted.
Padlock not included



BKT-SX20

SX20 Codec Bracket

Fits most of our products



PM-RP-BKT

RealPresence® Group 300 & 500

Codec Bracket
Can be wall mounted or mounted to our carts



PM-HDCB

Codec Bracket

For PM-S, PM-D, PM-S-XL, PM-S-FL, PM-XFL-D, PM-XFL-S & wall



PM-CMP

Codec Mounting Plate

Fits PM-S, PM-D, PM-S-XL, PM-S-FL, PM-XFL-D & PM-XFL-S



PM-HD-EXP

Codec Bracket

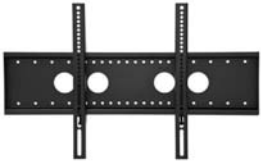
Designed for LifeSize® Express™ 200/220 codecs. Can be mounted on spine or on back of bracket



PM-PC-BKT

Codec/PC Bracket

Fits PM-S, PM-D, PM-S-XL, PM-S-FL, PM-XFL-D, PM-XFL-S & PM-XFL-LIFT



PM-BKT-S
Additional TV Bracket
For PM-S, PM-S-XL,
PM-S-FL, PM-XFL-D,
PM-XFL-S



SBB
Sound Bar Bracket
Can be mounted above or below TV.
Available for the PM series (All),
TP1000 (All) & MC1000 (All)



PM-S2D-KIT (flat bracket)
PM2-S2D-KIT (tube style)
Upgrade Kit
From single to dual TV mount

Shelves



SYZ1
Metal Laptop Shelf
Fits AVFI stands



SYZ2
Metal Laptop Shelf with
Extension Plate
Fits AVFI stands



SYZ3
Metal Laptop Shelf Arm
Fits AVFI stands



SYZ4
Metal Laptop Shelf with Hook Bracket
Fits AVFI stands



SH-PM
Additional Metal Shelf
Available in Black finish
Fits PM-S-FL, PM-XFL-D &
PM-XFL-S



SH-TP-B
Front Shelf
3/4" Black thermal wrap finish.
Fits our stands TP1000 (All) &
TP800 (All)



PM-DSH
Work Surface with Handles
Available in Black finish
Fits PM-S-FL, PM-XFL-D &
PM-XFL-S

Rack Accessories



RMT12/RMT14
12U/14U Rack Frame Kit
(10-32 thread)



RR3-10-12-14-16-21
Set of Rack Rails
3U, 10U, 12U, 14U, 16U, 21U
10-32 thread (Sold separately)



9107
Lacing Bar (19" long)
Mounts to rack or sidewall



FAN
Cooling Fan
Quiet with 6 ft. power cord.
Grills included



PM-2RU
2U Bracket

Fits PM-S, PM-D, PM-S-XL, PM-S-FL,
PM-XFL-D, PM-XFL-S, PM-XFL-LIFT,
TVCB & TVCB-XL



9031/1-2-3
Utility Shelf

1-3 space rack utility vented shelf
Black only
Fits our carts



9041
Sliding Shelf

Sliding rack mounted shelf
Black only
Fits our carts



9052/2-3
Sliding Drawer

2-3 space rack mounted
steel sliding drawer. Black only
Fits our carts

Power/Data Modules



PB

Power Bar

6 outlet 110V with 10 ft. cord
Black only

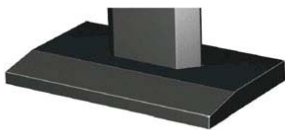


PM-PB

Mounted Power Bar

6 outlet 110V with 10 ft. cord
Black only

Other Accessories



PM-CVR

Cosmetic Steel Cover for Base
Fits PM-S, PM-D & PM-S-XL



LB3

Lockbox for Codecs & Electronics
Mounts to PM-S-FL spine and
standard 19" racks



CASTER

6" Metal Caster
Features grey non-marking tire.
Two are locking



PM-HANDLE

Grab Handles
Available for PM-S, PM-D & PM-S-FL



MAGKEY

Additional Key for Hidden Locks