

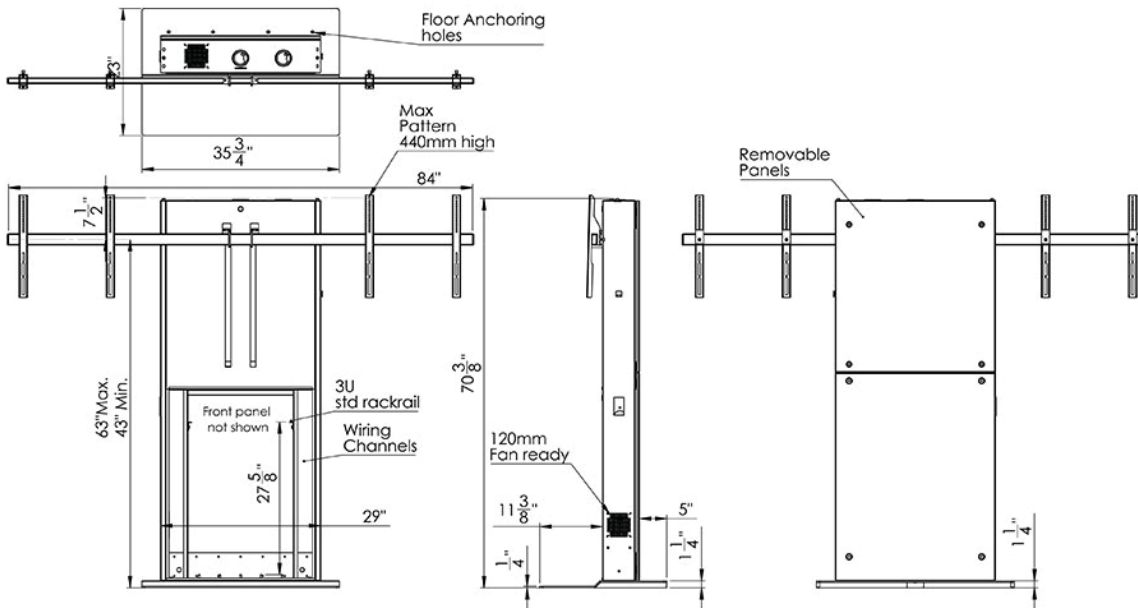
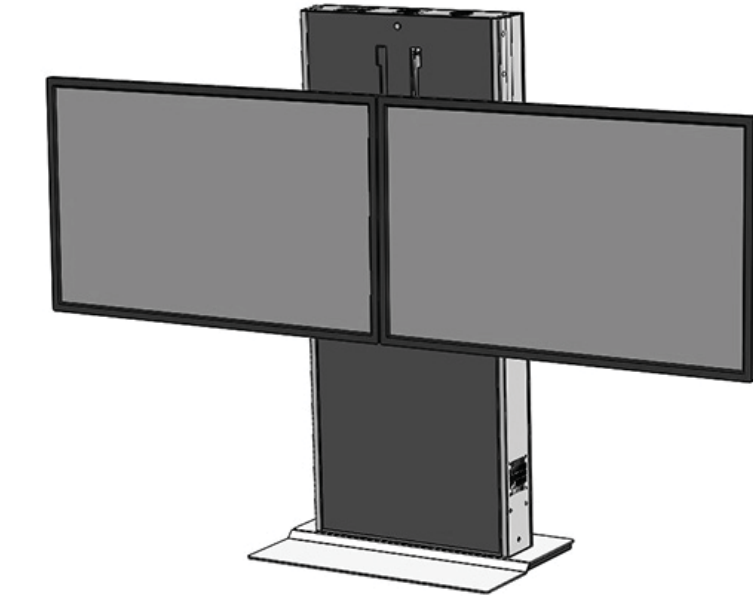
The **LFT7000FS-D** heavy duty fixed lift stand for dual TV's and interactive displays. Featuring a fixed weighted base ideal for open areas and digital signage. Ideal for environments where adjustable height or ADA is required. Internally it features vertical 3U rack rails behind the bottom locking panel. Cable channel and ventilation

Standard Features

- Accommodates up to 42" to 70" monitors (280 lbs total capacity - 800x440mm VESA max)
- 20" travel electric Worm-Drive actuator for safety and reliability
- Cable push-button remote for easy incremental adjustments
- Fixed base is ADA accessible (1/4" height at front)
- Removable locking front panels with wiring channel inside main pillar
- Scratch resistant powder coat finish
- Grey metal frame with Shark Grey-SGT panel color
- 3U vertical rack inside

Options

- **TVCB-XL** Camera bracket (For video conference applications allowing camera to ride up & down with the screen)
- **CBB-TV** Under TV camera bracket (26" - 80" TV's)
- **PB** Six outlet power bar with 10 ft. cord



Specifications

Model: LFT7000FS-D
Width: 84"
Depth: 23"
Height: 70"

Colors

Light grey metal frame with Shark Grey-SGT panel color

The information contained in this drawing is the sole property of AVFI. Any reproduction in part or as a whole without the written permission of Audio Visual Furniture International is prohibited. We can build or modify stock configurations to suit customer specifications. Please contact us to discuss how this service can help meet your needs. Some quantity restrictions may apply. Specification subject to change without notice. Computers, cameras, monitors, etc. are shown to illustrate product usage and are not included unless otherwise noted.