



Special Feature:
Console can be dismounted to make use of the entire work surface. Front panel of the console can be easily removed as well from a wedge position, while maintaining the privacy of your presentation.



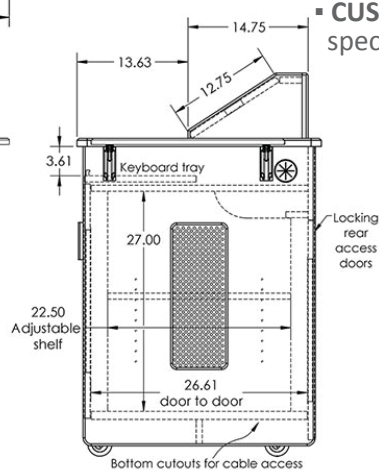
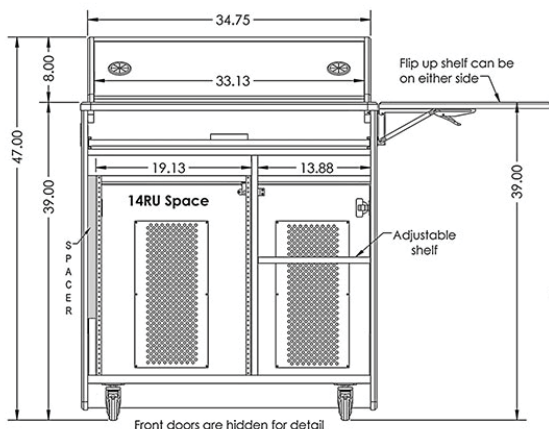
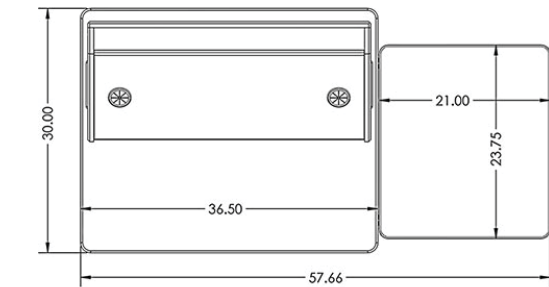
The roll-about multimedia podiums are the ideal solution for distance education, electronic classrooms and corporate training sites. Model **PD51** features a large customizable top surface to support monitors, laptops and room control systems.

Standard Features

- Large 36.5" W X 30" D work surface
- Removable console
- Easy front and back access with metal vents
- 14U electronic equipment rack rail
- Wide keyboard tray & folding side shelf
- Interior shelf and PC/Storage compartment
- Ventilation provided through vents all around
- Heavy-duty casters for easy maneuvering (2 locking)
- Highly resistant thermowrap surface & body finish
- Ships assembled

Options

- **C900S** 15" - 24" Adjustable monitor arm
- **PLM1022** 10" - 24" Monitor mount
- **MM1232** 12" - 32" Monitor mount
- **MCB1925** 19" - 25" monitor/camera bracket
- **FM3** Count down timer/ clock
- **MIC-18** MX418 S/C Shure Gooseneck microphone
- **LIGHT-18** Littlite Gooseneck
- **PB** Six outlet power bar with 10 ft. cord
- **PC-PATCH** 2x 110AC, RJ45, Phone, 2x USB
- **SF-PB3** Surface mounted 3-outlet 120V power bar
- **CUB3** Round cable well
- **CUB4** Black-B/Silver-S Power Panel
- **CUB5** Round cable well (Black or Silver)
- **CUB8** Table top cable well
- **POP5** Pop-up connection panel
- **CHGQIW** Wireless charging station white (Only on flat cutout)
- **CHGQI-DNGL** Dongle lightning, 30-pin, Micro-USB. Requires CHGQIW.
- **9031/9041/9052** Metal shelves/drawer (Check website)
- **RR14** 14U rack rail kit (Rear)
- **9107** Lacing bar (19" long)
- **LEV4AX4** 4x Levelers for non-mobile applications
- **CUSTOM CUTOUT** Cutouts for electronics or other items specified by the customer



Specifications

Model: PD51
Width: 36.5"
Depth: 30"
Height: 47"

Finishes



Other finishes are available. Check website.

The information contained in this drawing is the sole property of Audio Visual Furniture International. Any reproduction in part or as a whole without the written permission of Audio Visual Furniture International is prohibited. AVFI can build or modify stock configurations to suit customer specifications. Please contact us to discuss how this service can help meet your needs. Some quantity restrictions may apply. Specification subject to change without notice. Computers, cameras, monitors, etc. are shown to illustrate product usage and are not included unless otherwise noted.