



The C20 codec bracket model **BKT-C20** allows you to easily install your video conferencing codec. Its design securely attaches codec's to all of our products or it can be wall mounted. Constructed from durable 11ga steel and powder coated black, it completes the HD video conferencing install. Padlock not included.

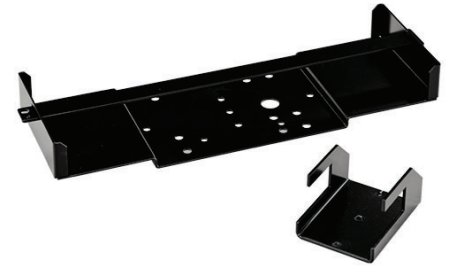
Standard Features

- Wall mountable
- Mounting hardware included
- Made from thick 11ga steel
- Powder coated textured black finish
- Padlock not included
- Fits our products: PM2-S, PM2-D, PM2-XL, MM1232 mounts; TVCB & TVCB-XL camera brackets; PM-S-FL, PM-XFL, PM-XFL-LIFT & TP1000 stands and MC1000 carts (See Packaged Solutions)

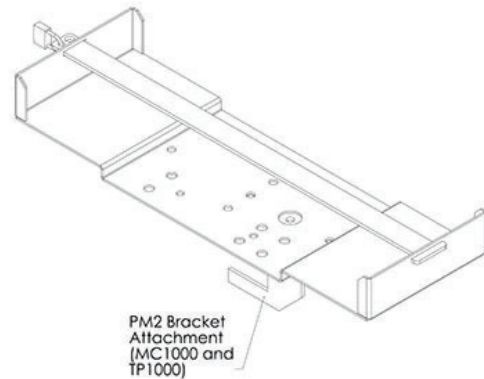
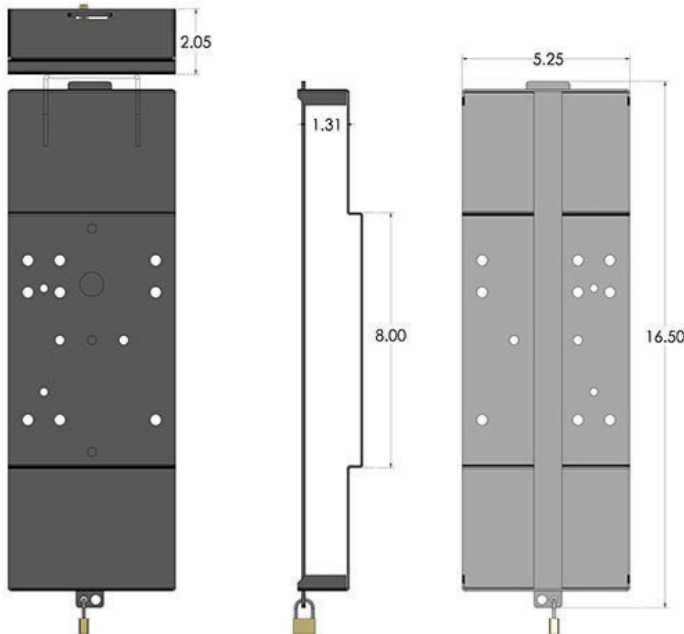
Specifications

Model: BKT-C20
Width: 5.25"
Depth: 2"
Height: 16.5"

Color



Wall mounted



The information contained in this drawing is the sole property of Audio Visual Furniture International. Any reproduction in part or as a whole without the written permission of Audio Visual Furniture International is prohibited. We can build or modify stock configurations to suit customer specifications. Please contact us to discuss how this service can help meet your needs. Some quantity restrictions may apply. Specification subject to change without notice. Computers, cameras, monitors, etc. are shown to illustrate product usage and are not included unless otherwise noted.